

What Medication Management Tool is Right for You?



Assisted

Staff-Assisted Medication

Individuals for whom technology is not an ideal solution:

- Need supervision to ensure medication has been taken
- Need physical assistance with medication



Medication Dispenser with Automated Alerts

Ideal for individuals who:

- Need doses to be pre-set in a dispenser
- May need a reminder from a caregiver (via automated phone call, email, or text) if the medication is not accessed after the local announcement (buzzer/ flashing light)



Medication Dispenser with Local Announcements

Ideal for individuals who:

- Need doses to be preset in a dispenser
- Need a regular reminder (via buzzer/flashing light) at the time medication should be taken

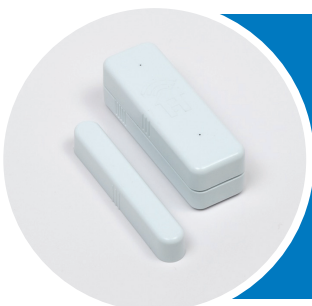


Independent

Email or Text Reminders

Ideal for individuals who:

- Can take medication independently
- Need a regular reminder at the time medication should be taken



Door Sensor on Medicine Cabinet

Ideal for individuals who:

- Can take medication independently
- Don't need reminders, but staff may want to know if the cabinet is opened at incorrect times

